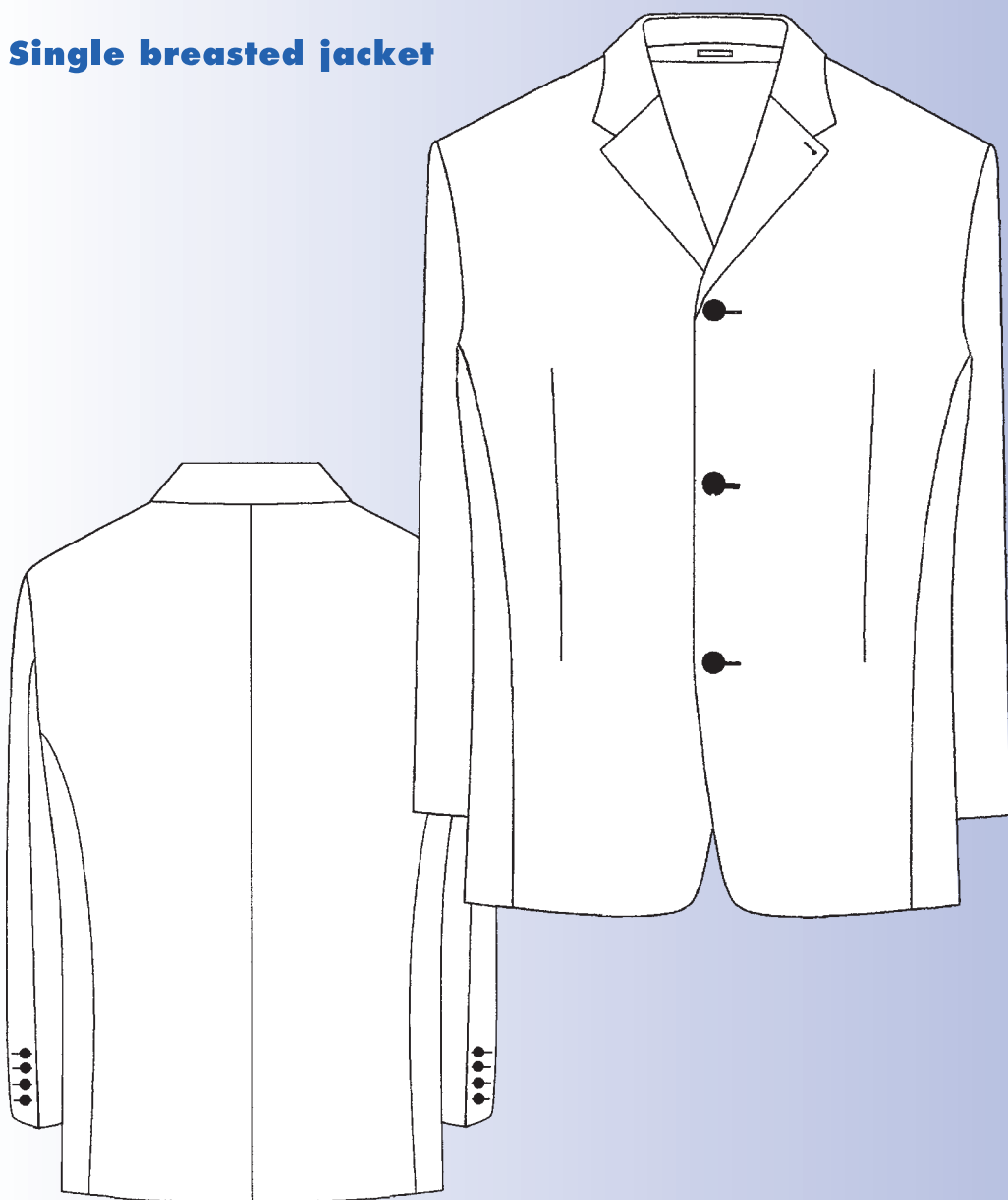


Single breasted jacket



BASIC MODEL

VARIATION 1 = Sewing of the closing seams with double lockstitch (301)

VARIATION 2 = Sewing of the closing and sleeve seams of the outer material and the lining with double chainstitch (401);
all the other closing and topstitch seams with double lockstitch (301)

Thread requirement	Variation 1	Variation 2
Closing seams	85 m	105 m
Lacing and breast canvas seams	30 m	30 m
Blindstitch seams	9 m	9 m
Buttons and bottonholes	15 m	15 m
Total	139 m	159 m

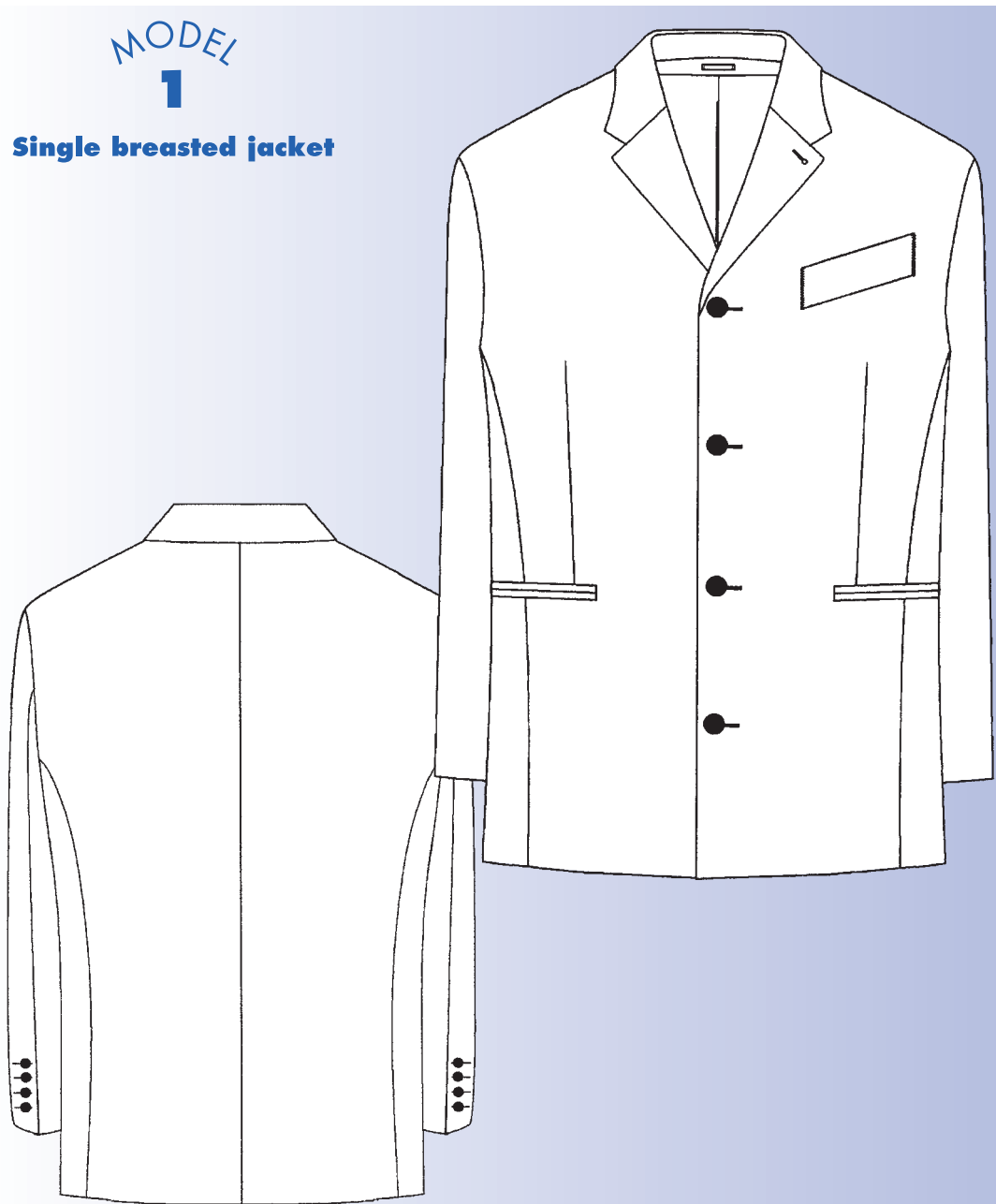
- N.B.:**
- Collar and breast canvas seams with zigzag double lockstitch (304)
 - Lacing of the armholes and ruffling of the sleeves with double chainstitch (401)
 - No overedging of the raw edges of the outer material and the lining
 - Standardlining with 4 inside pockets



*about 25°

MODEL
1

Single breasted jacket



Thread requirement

Topstitch seams breast welt pocket
Closing seams
Lacing and breast canvas seams
Blindstitch seams
Buttons and buttonholes

Variation 1

1 m
95 m
30 m
9 m
18 m

Variation 2

1 m
115 m
30 m
9 m
18 m

Total

153 m

173 m

N.B.: • Tailoring variation 1 and 2 of the basic model



Sheet ID number
for later ordering

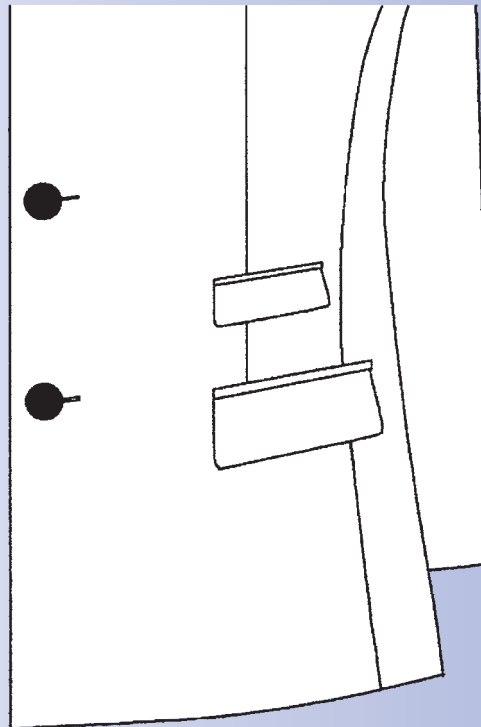
EMJasbMod 1

Service by **AMANN**

Sewing of small flap pocket

Thread requirement

Closing seams	3,00 m
(Topstitch seams	1,00 m)
<hr/>	
(Total	4,00 m)



Sewing of side patch pocket

Thread requirement for two

Closing seams	6,50 m
---------------	--------

